

# ALTO MAXXI 4

*The robust and powerful cold water high pressure cleaner*

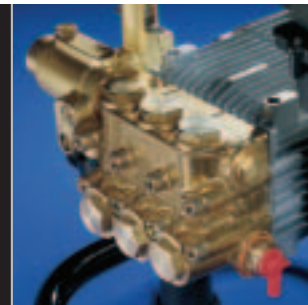
ALTO<sup>®</sup>  
Why  
Compromise<sup>™</sup>





# The rugged cleaner for the

*Unbeatable price-performance and robustness in one, easy*



An increasing number of customer groups have requirements for simple, yet rugged cold water pressure washers. Professional users in agriculture, building and construction need a machine that will suit their tough environments. Performance is important – as is cost effectiveness.

In reply to these demands, ALTO launches the new ALTO MAXXI line. This range of cold water professional units offers excellent performance and durability... at the right price. The ALTO MAXXI line is also simple and easy to handle.

The new ALTO MAXXI line is an ideal partner for those rough, everyday cleaning tasks.

### **Ease of use**

*The ALTO MAXXI line is simple to install and operate. All couplings and switches are in one zone. The pressure washer is quick and easy to prepare – saving you time and letting you get straight on with the cleaning.*

### **Durability**

*The ALTO MAXXI pump is equipped with the unloader valve. A special thermal valve eliminates the risk of overheating of the pump. All this together, increases reliability and durability.*

		<b>ALTO MAXXI 4-32</b>	<b>ALTO MAXXI 4-45</b>	<b>ALTO MAXXI 4-73</b>
<b>Pump:</b>				
Pump type		M4	M4	NP5
Pump pressure	bar	120	190	180
Pump pressure	MPa	12	19	18
Water flow, Q <sub>IEC</sub>	l/h	720	800	1350
Water flow, Q <sub>MAX</sub>	l/h	780	900	1450
Cleaning Impact	kg/force	3.2	4.5	7.3
Pump inlet temperature		50°C	50°C	50°C
Voltage, phases, frequency		230/1/50	400/3/50	400/3/50
Motor input power	kW	3.3	5.6	9.1
Current	A	15	10	15.5
Self suction height	m	1	1	1
<b>Size and weight:</b>				
Weight	kg	44	46	59
Dimensions LxWxH	mm	730x560x1000	730x560x1000	730x560x1000
<b>Standard Accessories:</b>				
HP hose, steel armed	m	10	10	10
Power cord	m	5	5	5
Nozzle size		25050	25045	25080
Lance		Universal	Universal	Universal
Item no.		301001404	301001405	301001408



### **Robust & ergonomic**

*The 25 mm steel frame makes the ALTO MAXXI strong and durable. The low centre of gravity and the optimal located wheels mean optimal stability and ease of transport.*



### **Inlet/outlet pipe stub**

*The inlet/outlet pipe stub is placed in front of the machine, to ensure optimal handling, when cleaning in long aisles e.g., in stables.*

# toughest environments

to use product



### Ergonomic

The foldable Softgrip handle makes the ALTO MAXXI easy to transport in the back of a car and reduces storage space. It is easy to coil up the power cord and the high-pressure hose on the existing holding devices.

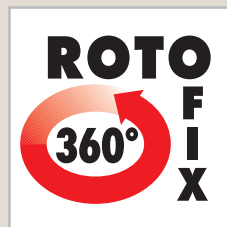


### MAXXI Powerpack

The motor pump unit is equipped with a 2800 rpm motor, including thermal protection. The pump has reinforced cylinder head and ceramic pistons. The unloader valve protects the pump against overload and it permits pressure and flow regulation directly from the spray gun.

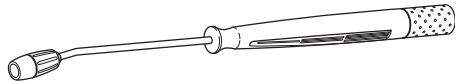
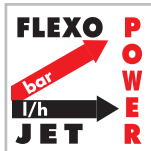
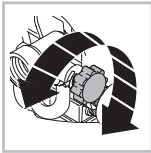


Relaxed operation without twists in the high-pressure hose.



Rotation of the lance by 360° and locking of the spraying device-adjustment for hard-to-reach places.

# Top accessories for your ALTO MAXXI



## For low pressure detergent application:

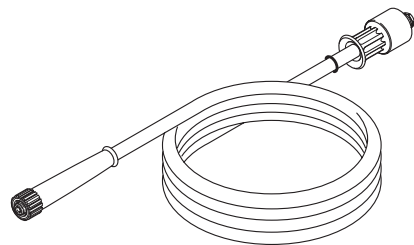
Kit contains: detergent valve, injector nozzle, FlexoPower lance 1000 mm with HP nozzle:

ALTO MAXXI 4-29, 4-29A	Art No: 301001502
ALTO MAXXI 4-32	Art No: 301001503
ALTO MAXXI 4-45	Art No: 301001504
ALTO MAXXI 4-69, 4-73	Art No: 301001505

## Tornado Plus Nozzle:

To increase your clening effect

ALTO MAXXI 4-45	Art No: 101119740
ALTO MAXXI 4-29	Art No: 101119743
ALTO MAXXI 4-73	Art No: 101119750
ALTO MAXXI 4-69	Art No: 101119752
ALTO MAXXI 4-32	Art No: 101119741



## Even longer HP hoses:

15 m DN 8:	62363
20 m DN 8:	61252
50 m DN 8:	63247



## Turbo Hammer nozzle, rotating 0° Nozzle for heavy duty cleaning task:

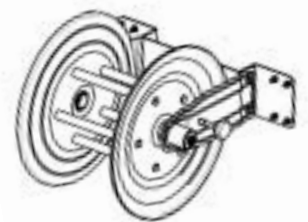
### Only nozzle head:

ALTO MAXXI 4-29, 4-29A	Art No: 48875
ALTO MAXXI 4-39	Art No: 48872
ALTO MAXXI 4-45, 4-45A	Art No: 48874
ALTO MAXXI 4-69	Art No: 48893
ALTO MAXXI 4-73, 4-73A	Art No: 301001110

### Complete lance length 1000 mm:

ALTO MAXXI 4-29, 4-29A	Art No: 61245
ALTO MAXXI 4-39	Art No: 106402171
ALTO MAXXI 4-45, 4-45A	Art No: 106402170
ALTO MAXXI 4-69	Art No: 106402170
MAXXI 4-73, 4-73A	Art No: 301001347

Hose reel for 50 m  
High-pressure hose.  
Art No: 301001584



ALTO is one of the world's biggest suppliers of powered cleaning equipment with a turnover of app. 330 million € and 1800 employees. We are located in all main European countries, US and Asia with our headquarters in Denmark and production facilities in Germany,

Denmark, Hungary, Singapore and the US. We supply quality high-pressure washers, vacuum cleaners and floor care equipment to agriculture, automotive and industrial companies, cleaning contractors and private consumers.

ALTO is a market and customer driven company with focus on innovation and growth. We believe in long lasting and developing relationships with our customers, suppliers and employees

Distributed by:

**ALTO**<sup>®</sup>  
www.alto-online.com